

Silencer Accessories

Connectors



Reducing Flex Connector

Part Number	Size
901100F	5 × 8 × 18
901101F	6 × 8 × 18
901102F	8 × 10 × 18



Wye Assembly

Part Number	Size	Engine Model
909901Y	6 × 6 × 8	Cat® 398/399
909902Y	8 × 8 × 14	Cat® 3516 Quad Turbo
909903Y	8 × 8 × 16	Cat® 3516 Quad Turbo
909904Y	8 × 8 × 18	Cat® 3516 Quad Turbo
909905Y	5 × 5 × 8	Onan® VTA28G1/2
909906Y	6 × 6 × 10	Onan® KTA38G1/2
909907Y	6 × 6 × 10	Onan® KTA38G3/4/5
909908Y	6 × 6 × 10	Onan® KTA50G1/2
909909Y	8 × 8 × 14	Onan® KTTA50G2
909910Y	5 × 5 × 8	Detroit 12V71TA
909911Y	5 × 5 × 8	Detroit 12V92T
909912Y	5 × 5 × 8	Detroit 16V71T
909913Y	5 × 5 × 8	Detroit 16V92T
909914Y	8 × 8 × 12	Detroit 12V149T
909915Y	10 × 10 × 14	Detroit 12V149TIB
909916Y	10 × 10 × 14	Detroit 16V149T
909917Y	10 × 10 × 14	Detroit 16V149TIB
909918Y	10 × 10 × 14	Detroit 24V71TA
909919Y	8 × 10 × 14	Detroit 20V149TI



ANSI Flanged Connections

Part Number	Size
909230F	3 × 18
909235F	3.5 × 18
909240F	4 × 18
909250F	5 × 18
909260F	6 × 18
909280F	8 × 18
909282F	10 × 18
909284F	12 × 18
909286F	14 × 18
909288F	16 × 18



Male NPT Connections

Part Number	Size
909110P	1 × 18
909113P	1.25 × 18
909115P	1.5 × 18
909120P	2 × 18
909125P	2.5 × 18
909130P	3 × 18
909135P	3.5 × 18
909140P	4 × 18
909150P	5 × 18
909160P	6 × 18
909180P	8 × 18

All assemblies are heli-arc welded to ensure that the base material is not undercut.

Expanded and slotted cuffs may be substituted for male pipe threads at no charge.

Cat® or Cummins flanges may be substituted for ANSI flange at no charge.

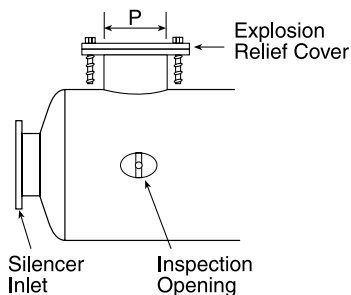
Wye Assembly can be modified with large outlet flanges upon request.

We verify engine outlet flange dimensions and outlet centerline spreads on each order due to continuous changes by engine manufacturers.

Note: 14"–16" no deduct below 18"; furnished with 150 lb standard flanges and stainless steel bellows

Silencer Accessories

Gaskets, Caps, and Openings



Explosion Relief Cover

Part Number	Body Size	Pressure Relief Cover Diameter
Q34361	10-14	4.125
Q34362	16-18	8.125
Q34363	22-26	8.250
Q34853	30-36	12.375
Q34854	42-48	16.000
Q34855	54-60	20.000

Explosion relief covers are designed to open at 5 PSI to protect silencer shell against rupture in case of backfire or explosion of residual gases within the exhaust system. One unit in the first chamber of silencer is adequate.

Gasket Kit (Nut/Bolt)

Part Number	Size
Q347458	4.0
Q347459	5.0
Q347460	6.0
Q347461	8.0
Q347462	10.0
Q347463	12.0
Q347464	14.0
Q347465	16.0
Q347466	18.0
Q347467	20.0
Q347468	22.0

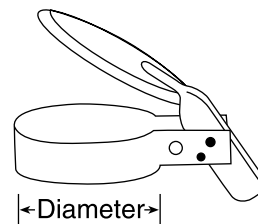
Inspection Openings

Part Number	Insp Opening Sz	Weight
Q34822	5 × 7	6.0
Q34852	8 × 10	12.0

Inspection openings have removable covers to provide access to silencer internals for inspection or cleaning. One opening per silencer is recommended.

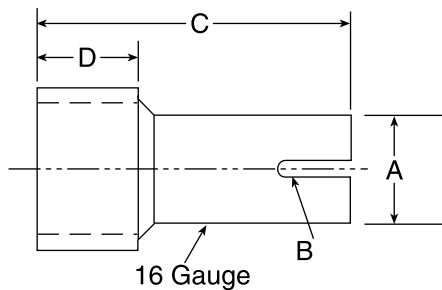
Gaskets

Part Number	Size
Q04166	4.0
Q04167	5.0
Q04168	6.0
Q04169	8.0
Q04170	10.0
Q04171	12.0
Q04172	14.0
Q79468	16.0
Q79469	18.0
Q79470	20.0
Q79471	22.0



Rain Caps

Part Number	Exhaust Stack Outside Diameter
89420A	2.00
89425A	2.50
89430A	3.00
89435A	3.50
89440A	4.00
89450A	5.00
89460A	6.00
89480A	8.00
89483A	8.25
89482A	10.00
89495A	10.40
89484A	12.00
89498A	12.40
89486A	14.00
89488A	16.00
89492A	18.00
89494A	20.00
89496A	22.00

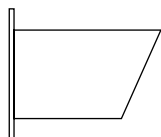


Slotted Pipe End Adapters

Part Number	Size NPT	(A) Inside Diameter	(B) Slots	(C) Overall Length	(D) Neck Length
40707K	0.75	.755/.755	2	2.5	0.81
40710K	1.00	1.005/1.025	2	2.5	1.00
40713K	1.25	1.255/1.275	2	3.0	1.00
40715K	1.50	1.505/1.525	2	3.0	1.00
40720K	2.00	2.005/2.025	4	4.0	1.10
40725K	2.50	2.505/2.535	4	5.0	1.60
40730K	3.00	3.005/3.035	4	5.5	1.60
40735K	3.50	3.505/3.545	4	6.0	1.70
40740K	4.00	4.005/4.045	6	6.5	1.70

Silencer Accessories

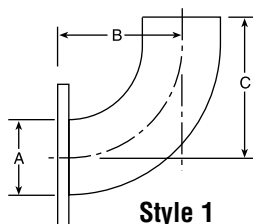
Clamps and Elbows



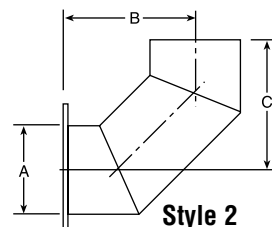
Outlet Extensions

Part Number	Size	Length
40340K	4.0	8.5
40350K	5.0	10.5
40360K	6.0	12.5
40380K	8.0	16.5
40382K	10.0	20.6
40384K	12.0	24.6
40386K	14.0	28.6
40388K	16.0	28.5

Outlet Extensions include nuts, bolts and gasket.



Style 1



Style 2

90° Outlet Elbows

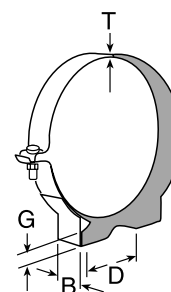
Part Number	Style	A	B	C
40640K	1	4.000	6.5	7.5
40650K	1	5.000	8.5	9.0
40660K	1	6.000	12.5	12.0
40680K	2	8.250	12.0	12.0
40682K	2	10.375	14.0	14.0
40684K	2	12.375	16.0	16.0

90° Outlet Elbows include nuts, bolts, gaskets and 125/150# ASA drilled flanges; Style I short radius 90° (14GA D.Q.S.K. aluminized steel); Style II 90° mitered tube (12GA aluminized steel)

Mounting Bracket Clamp Style 1

Part Number	Size	T	B	D	G
Q186091	9.0	0.09	4.25	4.5	0.88
Q27240	10.0	0.09	1.50	5.0	0.82
Q186092	11.0	0.09	1.25	5.0	0.88
Q27241	12.0	0.09	1.50	5.0	0.82
Q27242	14.0	0.09	1.50	6.0	0.94
Q27243	16.0	0.09	1.50	6.0	0.94

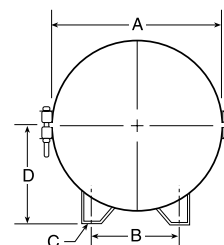
Style 1



Mounting Bracket Clamp Style 2

Part Number	Size	T	B	D	G
Q27244	18.0	18.3	9.0	0.63	11.12
Q27245	22.0	22.15	11.0	0.63	13.62
Q27246	26.0	26.15	13.0	0.63	15.44
Q27247	30.0	30.25	15.0	0.63	17.25
Q27248	36.0	36.25	18.0	0.63	20.12

Style 2



Mounting bracket clamps are available for silencers up to 36" body diameter. Type "F" brackets welded to silencers greater than 36" in body diameter. Specifications are subject to change without notice, all dimensions are in inches.

Split design allows for easier installation of larger silencers. Each part consists of two mounting brackets.

Silencer Accessories

Weld-On Mounting Brackets

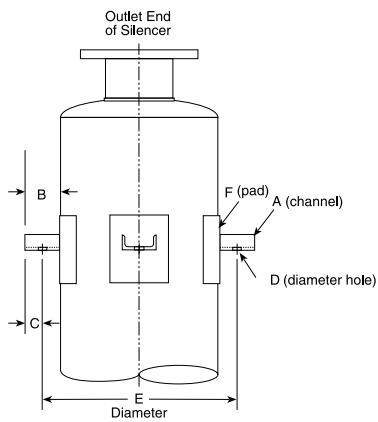
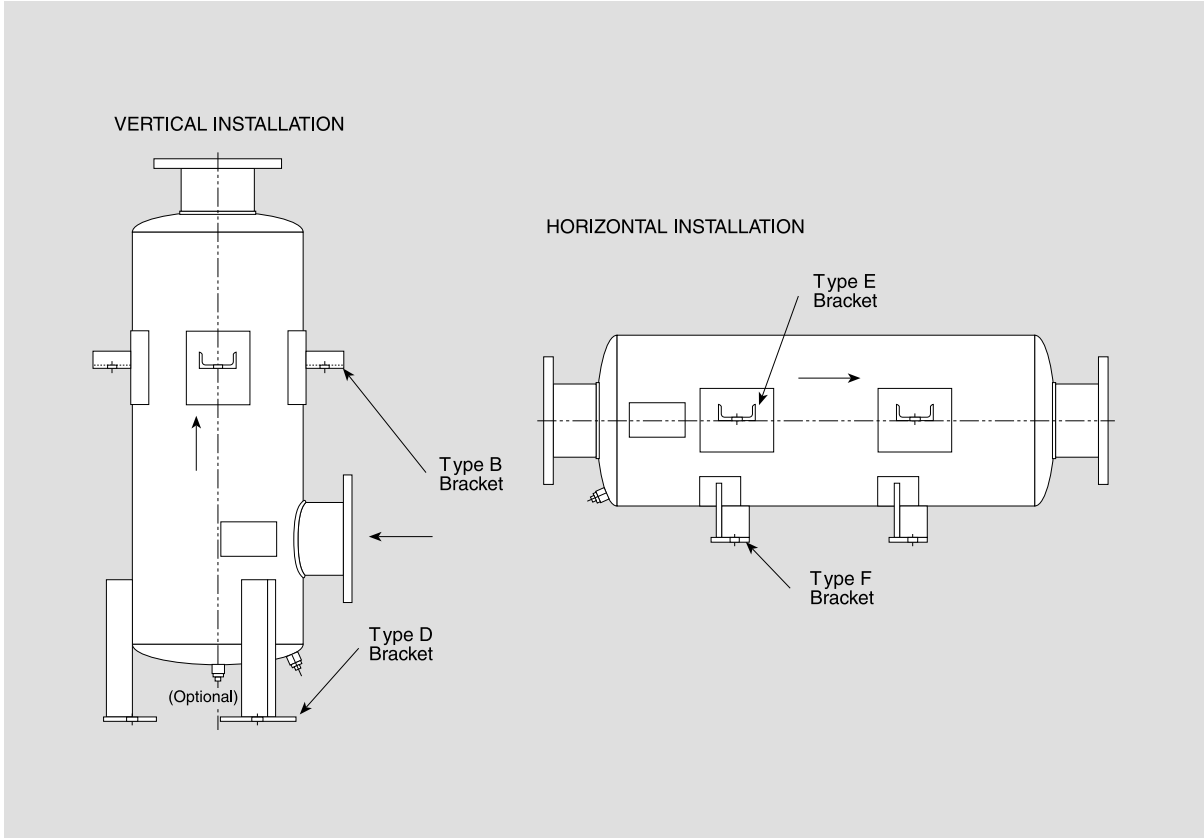
4

3

2

1

See page 1.1 for ordering information | www.universalsilencer.com

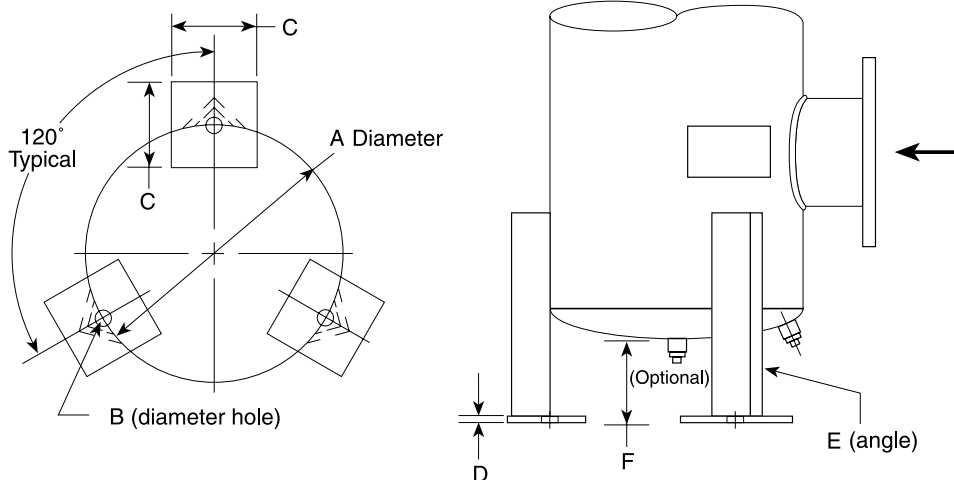


Type "B" Mounting Brackets

Body Dia	A	B	C	D	E	F
10.12	10.0	0.500	6.0	0.5	20×20×187	5.0
11.12	11.0	0.500	6.0	0.5	20×20×187	5.0
12.12	12.0	0.500	6.0	0.5	20×20×187	5.0
14.12	14.0	0.500	6.0	0.5	20×20×187	5.0
16.12	16.0	0.500	6.0	0.5	20×20×187	5.0
18.12	18.0	0.500	6.0	0.5	20×20×187	5.0
22.12	22.0	0.625	6.0	0.5	30×30×500	5.0
26.12	26.0	0.625	6.0	0.5	30×30×500	5.0
30.12	30.0	0.625	6.0	0.5	30×30×500	5.0
36.12	36.0	0.875	6.0	0.5	30×30×500	5.0
42.25	42.0	0.875	7.0	0.5	40×40×500	5.0
48.25	48.0	1.125	7.0	0.5	40×40×500	5.0
54.25	54.0	1.125	7.0	0.5	40×40×500	5.0
60.25	60.0	1.125	7.0	0.5	40×40×500	5.0

Silencer Accessories

Weld-On Mounting Brackets

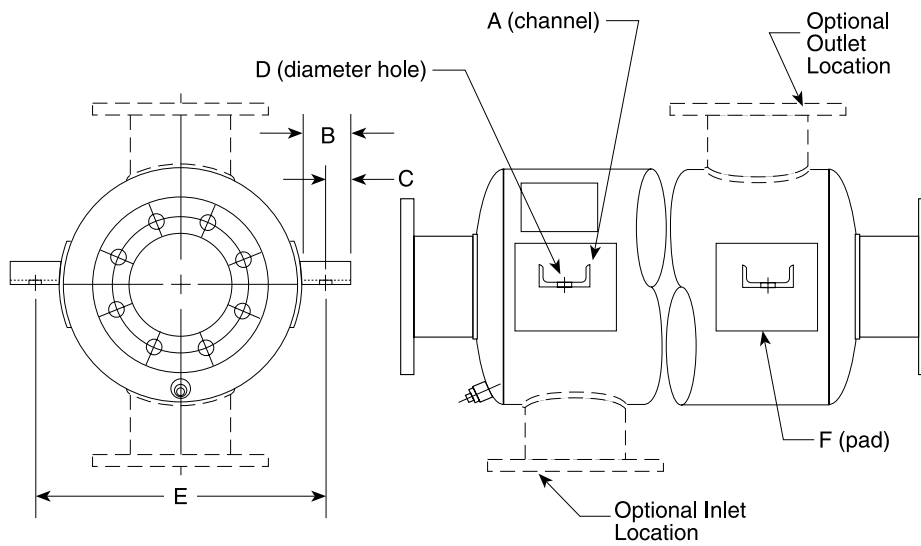


Type "D" Mounting Brackets

Body Diameter	A	B	C	D	E	F
10.12	10.0	0.500	6.0	0.5	2.0 × 2.0 × .187	5.0
11.12	11.0	0.500	6.0	0.5	2.0 × 2.0 × .187	5.0
12.12	12.0	0.500	6.0	0.5	2.0 × 2.0 × .187	5.0
14.12	14.0	0.500	6.0	0.5	2.0 × 2.0 × .187	5.0
16.12	16.0	0.500	6.0	0.5	2.0 × 2.0 × .187	5.0
18.12	18.0	0.500	6.0	0.5	2.0 × 2.0 × .187	5.0
22.12	22.0	0.625	6.0	0.5	3.0 × 3.0 × .500	5.0
26.12	26.0	0.625	6.0	0.5	3.0 × 3.0 × .500	5.0
30.12	30.0	0.625	6.0	0.5	3.0 × 3.0 × .500	5.0
36.12	36.0	0.875	6.0	0.5	3.0 × 3.0 × .500	5.0
42.25	42.0	0.875	7.0	0.5	4.0 × 4.0 × .500	5.0
48.25	48.0	1.125	7.0	0.5	4.0 × 4.0 × .500	5.0
54.25	54.0	1.125	7.0	0.5	4.0 × 4.0 × .500	5.0
60.25	60.0	1.125	7.0	0.5	4.0 × 4.0 × .500	5.0

Silencer Accessories

Weld-On Mounting Brackets

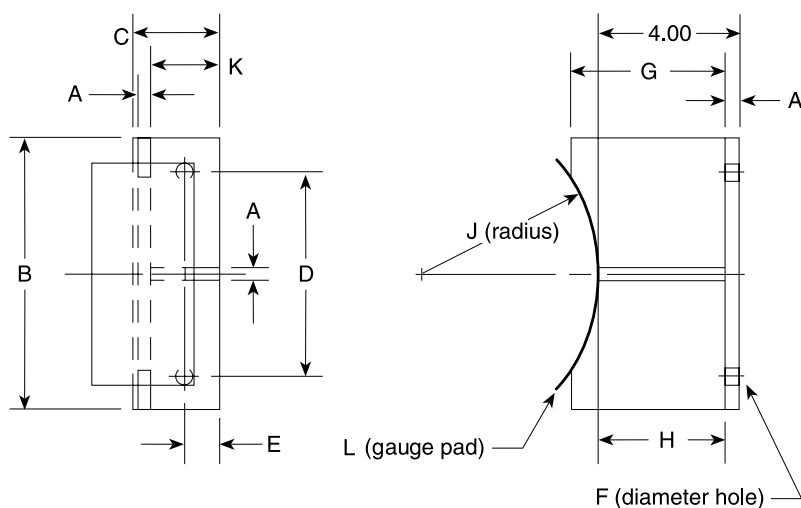


Type "E" Mounting Brackets

Body Diameter	A	B	C	D	E
10.12	C4 × 7.25	4.0	2.0	0.500	14.3
11.12	C4 × 7.25	4.0	2.0	0.500	15.3
12.12	C4 × 7.25	4.0	2.0	0.500	16.3
14.12	C4 × 7.25	4.0	2.0	0.500	18.3
16.12	C4 × 7.25	4.0	2.0	0.500	20.3
18.12	C4 × 7.25	4.0	2.0	0.500	22.3
22.12	C4 × 7.25	4.0	2.0	0.500	26.4
26.12	C4 × 7.25	4.0	2.0	0.625	30.4
30.12	C4 × 7.25	4.0	2.0	0.625	34.4
36.12	C4 × 7.25	4.0	2.0	0.625	40.4
42.25	C4 × 7.25	4.0	2.0	0.625	46.5
48.25	C4 × 7.25	4.0	2.0	0.625	52.5
54.25	C4 × 7.25	4.0	2.0	0.875	58.5
60.25	C4 × 7.25	4.0	2.0	0.875	64.5

Silencer Accessories

Weld-On Mounting Brackets

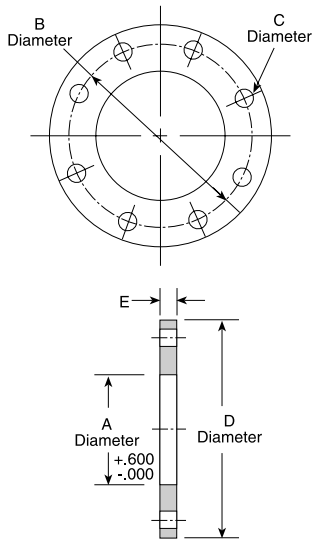


Type "F" Mounting Brackets

Body Dia.	A	B	C	D	E	F	G	H	J	K	L
8.12	0.250	7.0	2.0	5.0	0.75	0.438	5.0	3.69	4.11	1.5	16.0
9.00	0.250	7.0	2.0	5.0	0.75	0.438	4.5	3.69	4.55	1.5	16.0
10.12	0.375	8.0	2.5	6.0	1.00	0.500	1.5	3.55	5.14	2.0	14.0
11.12	0.375	9.0	2.5	7.0	1.00	0.500	5.0	3.55	5.64	2.0	14.0
12.12	0.375	10.0	2.5	8.0	1.00	0.500	5.5	3.55	6.14	2.0	14.0
14.12	0.375	13.0	2.5	11.0	1.00	0.500	6.0	3.55	7.14	2.0	14.0
16.12	0.375	15.0	2.5	13.0	1.00	0.500	6.5	3.52	8.17	2.0	12.0
18.12	0.375	17.0	2.5	15.0	1.00	0.500	7.0	3.52	9.17	2.0	12.0
22.12	0.500	20.0	3.0	18.0	1.00	0.625	7.0	3.36	11.22	2.0	10.0
26.12	0.500	24.0	3.0	22.0	1.00	0.625	8.0	3.36	13.24	2.0	10.0
30.12	0.500	29.0	4.0	26.0	1.50	0.875	9.0	3.36	15.24	3.0	10.0
36.12	0.500	32.0	4.0	28.0	1.50	0.875	10.0	3.36	18.26	3.0	10.0
42.25	0.500	34.0	4.0	30.0	1.50	1.125	10.0	3.36	21.26	3.0	10.0
48.25	0.500	39.0	4.0	35.0	1.50	1.125	11.0	3.32	24.30	3.0	7.0
54.25	0.500	44.0	4.0	40.0	1.50	1.250	11.0	3.32	27.33	3.0	7.0
60.25	0.500	49.0	4.0	45.0	1.50	1.250	12.0	3.32	30.33	3.0	7.0

Silencer Accessories

Mounting Flanges

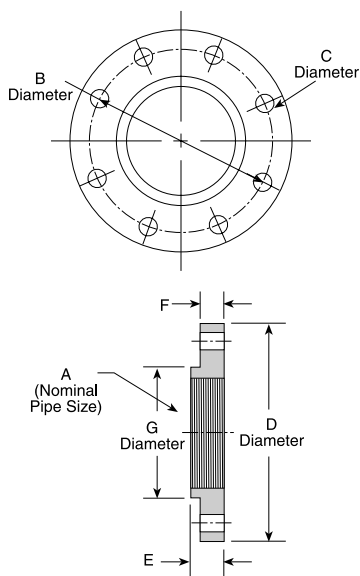


Mounting Flanges (Unthreaded)

Part Number	Nominal Pipe Size	A	B	C	D	E	Holes
40140K	4.0	4.563	7.50	0.750	9.0	0.500	8
40150K	5.0	5.625	8.50	0.875	10.0	0.500	8
40160K	6.0	6.187	9.50	0.875	11.0	0.500	8
40180K	8.0	8.750	11.75	0.875	13.5	0.500	8
40182K	10.0	10.875	14.25	1.000	16.0	0.625	12
40184K	12.0	12.875	17.00	1.000	19.0	0.625	12
40186K	14.0	14.188	18.75	1.125	21.0	0.625	12
40188K	16.0	16.000	21.25	1.125	23.5	0.625	16
40199K	18.0	18.000	22.75	1.250	25.0	0.625	16
40121K	20.0	20.000	25.00	1.250	27.5	0.750	20
40122K	22.0	22.000	27.25	1.375	29.5	0.750	20

A "kit" consists of a mounting flange for each inlet and outlet, a gasket, and one capscrew and nut for each inlet and outlet mounting hole. Available in dual or single flange kits.

Listed part number for dual flange kits. Please call for single flange kits.



Mounting Flanges (Threaded)

Part Number	A	B	C	D	E	F	G	Holes
40040K	4	7.50	0.750	9.0	1.31	0.94	5.31	8
40050K	5	8.50	0.875	10.0	1.44	0.94	6.44	8
40060K	6	9.50	0.875	11.0	1.56	1.00	7.56	8
40080K	8	11.75	0.875	13.5	1.75	1.12	9.75	8

A "kit" consists of a mounting flange for each inlet and outlet, a gasket, and one capscrew and nut for each inlet and outlet mounting hole. Available in dual or single flange kits.

Listed part number for dual flange kits. Please call for single flange kits.