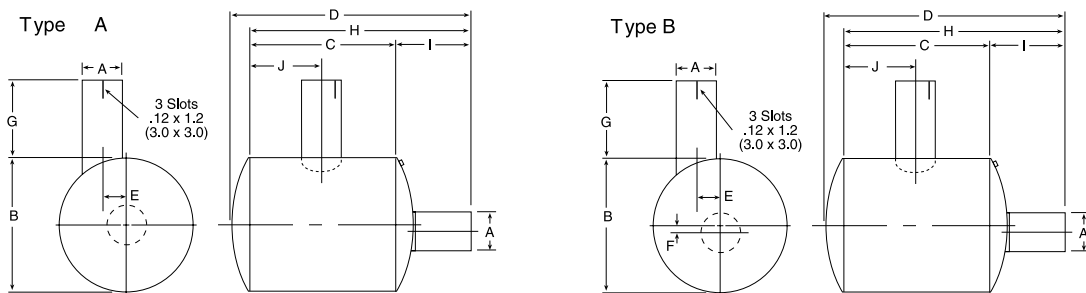
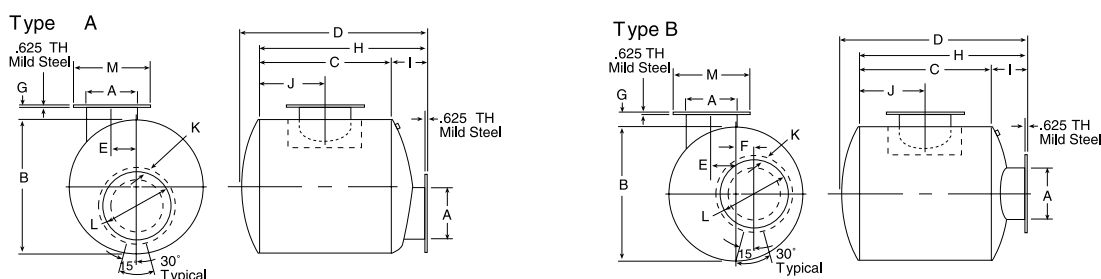


Space Saver units are designed for side-in side-out mounting, although either end may be used as an inlet. Using end-in side-out may result in lower attenuation reductions. Condensate drains standard on all units.

Space Saver Engine Exhaust Silencers



Part Number	A Inlet-Outlet Diameter	B Outside Body Diameter	C Body Length	D Overall Length	E Inlet Offset to C/L	F Outlet Offset to C/L	G Inlet Length	H Length to Flange	I Flange to Flange	J Offset Seam to Inlet C/L
47820S	2.0	7.00	8.0	12.70	1.10	—	4.0	12.0	4.0	4.0
47825S	2.5	8.50	8.5	13.33	1.60	—	4.0	12.5	4.0	4.3
47830S	3.0	12.11	9.3	14.65	—	—	4.0	13.1	3.9	4.6
47835S	3.5	12.11	12.0	19.42	2.70	—	4.0	18.0	6.0	6.0
47840S	4.0	12.11	16.0	23.32	2.40	—	4.0	21.9	5.9	8.0
47850S	5.0	16.11	16.5	23.89	3.70	—	4.0	22.4	5.9	8.2
47860S	6.0	16.11	22.0	29.49	2.50	1.5	4.0	28.0	6.0	11.0



Part Number	A Inlet-Outlet Diameter	B Outside Body Diameter	C Body Length	D Overall Length	E Inlet Offset to C/L	F Outlet Offset to C/L	G Inlet Length	H Length to Flange	I Flange to Flange	J Offset Seam to Inlet C/L	K Mounting Flange Bolt	L Bolt Hole Diameter	M Mounting Flange Diameter
47840F	4.0	12.11	16.0	23.32	2.40	—	4.0	21.9	5.9	8.0	0.750	7.50	9.0
47850F	5.0	16.11	16.5	23.89	3.70	—	4.0	22.4	5.9	8.3	0.875	8.50	10.0
47860F	6.0	16.11	22.0	29.49	2.50	1.5	4.0	28.0	6.0	11.0	0.875	9.50	11.0
47880F	8.0	22.15	25.0	36.28	4.50	3.4	4.0	33.0	8.0	12.5	0.875	11.75	13.5
47882F	10.0	26.15	30.0	41.87	4.42	4.0	4.0	38.0	8.0	15.0	1.000	14.25	16.0
47884F	12.0	30.21	36.0	48.41	3.58	3.5	4.0	44.0	8.0	18.0	1.000	17.00	19.0
47886F	14.0	36.21	36.0	51.29	6.50	5.0	4.0	46.0	10.0	18.0	1.125	18.78	21.0