

Electric Fire Pump Controllers Full Voltage – Limited Service

The FD20, Limited Service Controller can be used for motors 30HP or less, driving booster pumps or special fire service pumps where acceptable to the authority having jurisdiction. They are available with across-the-line starting only, with starting inrush current approximately 600% of rated motor full load amperes. All models are available with an LMR microprocessor option and are also available complete with automatic power transfer switch.



FD20

Standard Features

- Front Operated
- NEMA Rated Contactors
- Emergency Start Handle
- Run Period Timer
- Industrial Oil-Tight Pilot Devices
- Power On Light - Red
- SPDT Alarm Contacts for Phase Reversal and Phase Failure
- Visible Phase Reversal Indicator

Standard Features - with LMR

- Microprocessor Control
- Pressure, Voltage & Current Display
- LCD Message Retrieval - Last 2048 Messages
- Pressure Transducer - 600 PSI Max.
- Printer - Recorder
- Elapsed Time Meter
- Number of Operations Counter
- Run Period Timer
- Sequential Start Timer
- Weekly Test Timer
- Common Alarm Relay & Contacts
- NEMA 2 Enclosure
- NEMA Rated Contactor
- Emergency Start Operator
- Extra Set of Form-C Contacts for Phase Reversal & Phase Failure
- Additional Output Relay
- Pre-wired Terminals for Remote Start, Deluge Valve, Relief Valve Discharge, Low Suction Pressure & Interlock

Status LEDs	Alarm LEDs
Power On	Phase Reversal
Pump Running	Phase Failure
RPT Timer	Undervoltage
Sequence Timer	Overvoltage
Local Start	Relief Valve Discharge
Remote Start	Locked Rotor Trip
Deluge Valve	Low Suction Pressure
Interlock On	Emergency Start
Low Pressure	Fail to Start

FD20
Limited Service
Controller

FD30
Across-the-Line

FD40
Part Winding

FD50
Primary Resistor

FD60
Autotransformer

FD70
Wye-Delta
Open Transition

FD80
Wye-Delta
Closed Transition

FD90
Soft Start

FDC
Compact

FDF
Foam Pump
Controller

FDR
Residential

FD20 Technical Data & Specifications

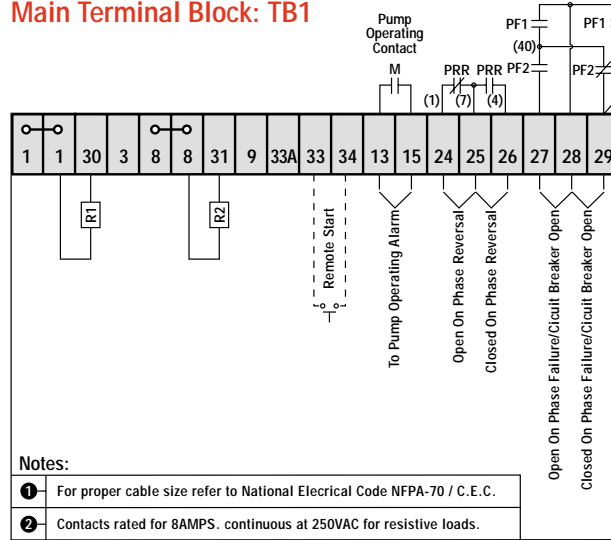
Voltage (V)	Motor (Hp)	Withstand Rating (kA)		Dimensions			Weight		With LMR Option				
		Std	Int	Height	Width	Depth	lbs	Kg	Height	Width	Depth	lbs	Kg
200-208	5-30	25	65	48 (1219)	22 (558)	9 (229)	250	113	60 (1524)	26.5 (673)	9 (229)	305	138
220-240	5-30	25	65	48 (1219)	22 (558)	9 (229)	250	113	60 (1524)	26.5 (673)	9 (229)	305	138
380-415	5-30	25	65	48 (1219)	22 (558)	9 (229)	250	113	60 (1524)	26.5 (673)	9 (229)	305	138
440-480	5-30	25	65	48 (1219)	22 (558)	9 (229)	250	113	60 (1524)	26.5 (673)	9 (229)	305	138
550-600	5-30	18	25	48 (1219)	22 (558)	9 (229)	250	113	60 (1524)	26.5 (673)	9 (229)	305	138
230V S/P	5-15	10	65	48 (1219)	22 (558)	9 (229)	250	113	60 (1524)	26.5 (673)	9 (229)	305	138



N.Y.C. APPROVED



Main Terminal Block: TB1



Ordering Guidelines:

FD20 ---

Horsepower

5 15 A = 200-208 V

7.5 20 B = 220-240 V

10 25 C = 380-415 V @ 50 Hz

30 D = 440-480 V

Voltage

E = 550-600 V

F = 416 V @ 60 Hz

G2 = 240V Single Phase

Options

Select From List Below

A Built-in Alarm System

B Alarm Bell

C1 Extra Contacts - "Pump Run" (one N.O. std.)

C2 Extra Contacts - "AC Power Failure" (one std. set)

C3 Extra Contacts - "Phase Reversal" (one std. set)

E1 NEMA 3R - Raintight Enclosure

E2 NEMA 4 - Watertight Enclosure

E3 NEMA 12 - Industrial Dust-tight Enclosure

E5 NEMA 4X - Stainless Steel Enclosure

I Intermediate Withstand Rating

*PRL "Pump Run" Light

L1 Language - English

L2 Language - French

L5 Language - Spanish

**P1 Mercoird 10-300 PSI Pressure Switch (Standard on FM Units)

**P2 Mercoird 25-600 PSI Pressure Switch

**P3 Alco 90-450 PSI Pressure Switch (Standard on Non-FM Units)

**P5 Alco 15-260 PSI Pressure Switch

P7 Low Suction Pressure Switch and Alarm Pilot Light

*P8 Low Suction Shutdown (Requires P7)

R1 Space Heater (120V)

R2 Space Heater c/w Thermostat

R3 Space Heater c/w Humidistat

R4 Low Pump Room Temperature Switch and Pilot Light

*S Sequential Start

*V1 Voltmeter (Single Phase)

*V2 Ammeter (Single Phase with Current Transformer)

*V3 Voltmeter & Ammeter (Three Phase)

*W Weekly Test Timer

X1 Printer/Pressure Recorder (Standard on FM LMR Units)

*Z Elapsed Time Meter

LMR Microprocessor Control

*Included with LMR option
**Not required with LMR option

*All units except FDR and FDF series are available with an automatic transfer switch option.
Custom options may be accommodated. Please consult factory for availability and price.