

FD20
Limited Service Controller



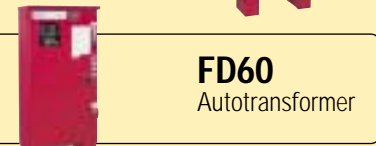
FD30
Across-the-Line



FD40
Part Winding



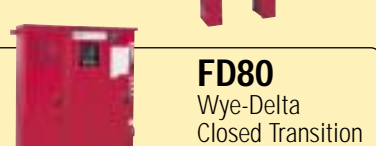
FD50
Primary Resistor



FD60
Autotransformer



FD70
Wye-Delta Open Transition



FD80
Wye-Delta Closed Transition



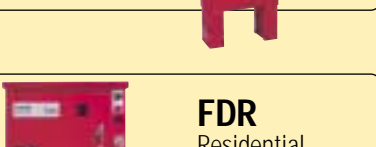
FD90
Soft Start



FDC
Compact



FDF
Foam Pump Controller



FDR
Residential

Electric Fire Pump Controller FTC Series – Compact with Transfer Switch Option

The Automatic Transfer Switch Option may be added to any FDC type Fire Pump Controller whenever automatic transfer from normal to alternate power is required. The Automatic Transfer Switch and Fire Pump Controller are each mounted in separate enclosures to form one unit and interwired.



ATS - MP1-E

The primary function of the ATS-MP1-E controller is to accurately monitor two power sources and provide the necessary intelligence to operate a transfer switch in an appropriate and timely manner. The ATS-MP1-E uses proven microprocessor-based technology that provides a high reliability and accuracy for all voltage sensing and timing functions.

The input function consists of keypad type pushbutton inputs (4 in total). In addition a fifth user input exists via a rear located PC type serial port connection, that is used for programming of options and setpoints.

Output functions consist of LED outputs (4 total) and a two line 16-character alphanumeric LCD display output.



SPECIFICATION SHEET

Electric Fire Pump Controller FDC Series - Compact

Designed to reduce the overall height of package installations, this 40 inch high by 12 inch deep controller allows installations in pump rooms that have restricted access and ceiling height. Available models include FDC20 Limited Service, FDC30 Across the Line and FDC60 Autotransformer models. All FDC20 Limited Service Controllers are available with or without *LMR* microprocessor control while FDC30 and FDC60 controllers are equipped with *LMR* microprocessor control as standard. All models meet UL, CSA, ULC, FM and NFPA 20 standards.



FDC

Standard Features

- Microprocessor Control
- Pressure, Voltage & Current Display
- Alarm & Status LED Indication
- LCD Message Retrieval - Last 2048 Messages
- Pressure Transducer - 600 PSI Max.
- Printer-Recorder
- Elapsed Time Meter
- Number of Operations Counter
- Run Period Timer
- Sequential Start Timer
- Weekly Test Timer
- Common Alarm Relay & Contacts
- NEMA 2 Enclosure
- NEMA Rated Contactors
- Emergency Start Operator
- Extra Set of Form-C Contacts for Phase Reversal & Phase Failure
- Additional Output Relay
- Pre-wired Terminals for Remote Start, Deluge Valve, Relief Valve Discharge, Low Suction Pressure & Interlock

Status LEDs

- Power On
- Pump Running
- RPT Timer
- Sequence Timer
- Local Start
- Remote Start
- Deluge Valve
- Interlock On
- Low Pressure

Alarm LEDs

- Phase Reversal
- Phase Failure
- Fail To Start
- Undervoltage
- Overvoltage
- Relief Valve Discharge
- Locked Rotor Trip
- Low Suction Pressure
- Emergency Start

FDC20 Technical Data & Specifications

Voltage (V)	Motor (Hp)	Withstand Rating (kA)		Dimensions			Weight	
		Std	Int	Height	Width	Depth	lbs	Kg
200-208	5-30	25	65	40 (1016)	30 (762)	12 (305)	305	138
220-240	5-30	25	65	40 (1016)	30 (762)	12 (305)	305	138
380-415	5-30	25	65	40 (1016)	30 (762)	12 (305)	305	138
440-480	5-30	25	65	40 (1016)	30 (762)	12 (305)	305	138
550-600	5-30	18	25	40 (1016)	30 (762)	12 (305)	305	138
230V S/P	5-15	10	65	40 (1016)	30 (762)	12 (305)	305	138

Note: FDC20 without LMR option - will be supplied as a standard size F20 limited service controller.

FDC30 Technical Data & Specifications

Voltage (V)	Motor (Hp)	Withstand Rating (kA)		Dimensions			Weight	
		Std	Int/High	Height	Width	Depth	lbs	Kg
200-208	5-40	100	150	40 (1016)	30 (762)	12 (305)	305	138
	50-100	100	Consult Factory				565	256
	125-150	100	Consult Factory				660	299
220-240	5-50	100	150	40 (1016)	30 (762)	12 (305)	305	138
	60-125	100	Consult Factory				565	256
	150-200	100	Consult Factory				660	299
380-415	5-75	100	150	40 (1016)	30 (762)	12 (305)	305	138
	100-200	100	Consult Factory				565	256
	250-300	100	Consult Factory				660	299
440-480	5-100	100	150	40 (1016)	30 (762)	12 (305)	305	138
	125-250	100	Consult Factory				565	256
	300-400	100	Consult Factory				660	299
550-600	5-100	25	100	40 (1016)	30 (762)	12 (305)	305	138
	125-300	25	35				565	256
	350-400	25	35				660	299

FDC60 Technical Data & Specifications

Voltage (V)	Motor (Hp)	Withstand Rating (kA)		Dimensions			Weight	
		Std	Int	Height	Width	Depth	lbs	Kg
200-208	5-40	25	25	40 (1016)	30 (762)	12 (305)	365	179
	50-150	100	Consult Factory				765	347
220-240	5-50	25	25	40 (1016)	30 (762)	12 (305)	365	179
	60-200	100	Consult Factory				765	347
380-415	5-75	25	25	40 (1016)	30 (762)	12 (305)	365	179
	100-300	100	Consult Factory				765	347
440-480	5-100	25	25	40 (1016)	30 (762)	12 (305)	365	179
	125-400	100	Consult Factory				765	347
550-600	5-100	25	100	40 (1016)	30 (762)	12 (305)	365	179
	125-400	25	35				765	347

FTC20 Technical Data & Specifications

Voltage (V)	Motor (Hp)	Withstand Rating (kA)		Dimensions			Weight	
		Std	Int	Height	Width	Depth	lbs	Kg
200-208	5-30	25	65	40 (1016)	60 (762)	12 (305)	610	277
220-240	5-30	25	65	40 (1016)	60 (762)	12 (305)	610	277
380-415	5-30	25	65	40 (1016)	60 (762)	12 (305)	610	277
440-480	5-30	25	65	40 (1016)	60 (762)	12 (305)	610	277
550-600	5-30	18	25	40 (1016)	60 (762)	12 (305)	610	277
230V S/P	5-15	10	65	40 (1016)	60 (762)	12 (305)	610	277

Note: FTC20 with LMR option will be supplied in the same size enclosure as the Non-LMR FTC20.

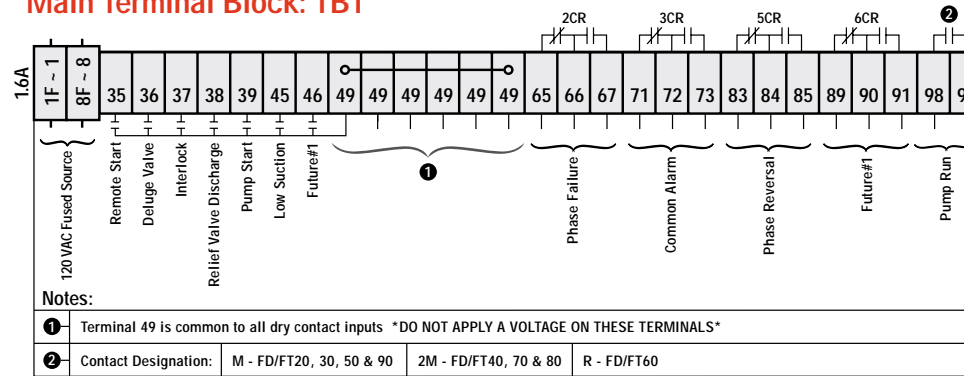
FTC30 Technical Data & Specifications

Voltage (V)	Motor (Hp)	Withstand Rating (kA)		Dimensions			Weight	
		Std	Int	Height	Width	Depth	lbs	Kg
200-208	5-40	100	150	40 (1016)	60 (762)	12 (305)	610	277
	50-100	100	Consult Factory				990	449
	125-150	100	Consult Factory				1085	492
220-240	5-50	100	150	40 (1016)	60 (762)	12 (305)	610	277
	60-125	100	Consult Factory				990	449
	150-200	100	Consult Factory				1085	492
380-415	5-75	100	150	40 (1016)	60 (762)	12 (305)	610	277
	100-200	100	Consult Factory				990	449
	250-300	100	Consult Factory				1085	492
440-480	5-100	100	150	40 (1016)	60 (762)	12 (305)	610	277
	125-250	100	Consult Factory				990	449
	300-400	100	Consult Factory				1085	492
550-600	5-100	25	100	40 (1016)	60 (762)	12 (305)	610	277
	125-300	25	35				990	449
	350-400	25	35				1085	492

FTC60 Technical Data & Specifications

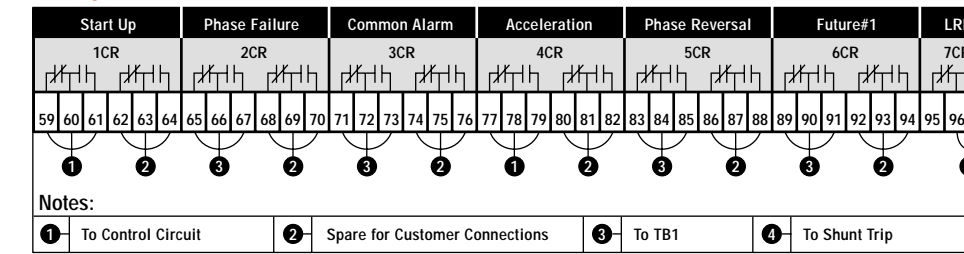
Voltage (V)	Motor (Hp)	Withstand Rating (kA)		Dimensions			Weight	
		Std	Int	Height	Width	Depth	lbs	Kg
200-208	5-40	25	65	40 (1016)	60 (762)	12 (305)	700	318
	50-150	100	Consult Factory				1190	540
220-240	5-50	25	65	40 (1016)	60 (762)	12 (305)	700	318
	60-200	100	Consult Factory				1190	540
380-415	5-75	25	65	40 (1016)	60 (762)	12 (305)	700	318
	100-300	100	Consult Factory				1190	540
440-480	5-100	25	65	40 (1016)	60 (762)	12 (305)	700	318
	125-400	100	Consult Factory				1190	540
550-600	5-100	25	100	40 (1016)	60 (762)	12 (305)	700	318
	125-400	25	35				1190	540

Main Terminal Block: TB1

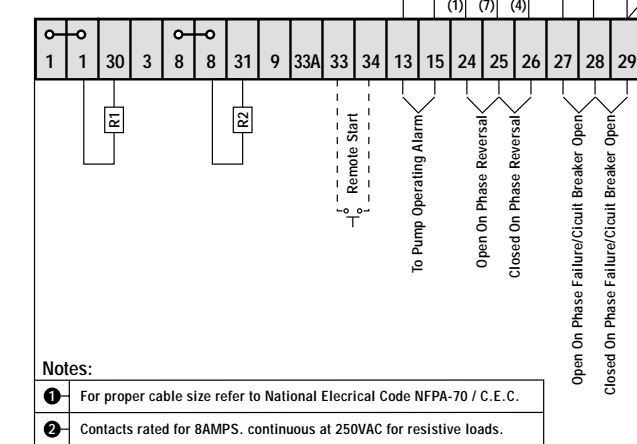


Notes:
 1 Terminal 49 is common to all dry contact inputs *DO NOT APPLY A VOLTAGE ON THESE TERMINALS*
 2 Contact Designation: M - FD/FT20, 30, 50 & 90 2M - FD/FT40, 70 & 80 R - FD/FT60

Relay Card



Main Terminal Block: TB1 FDC/FTC20 without LMR Option



Notes:
 1 For proper cable size refer to National Electrical Code NFPA-70 / C.E.C.
 2 Contacts rated for 8AMPS. continuous at 250VAC for resistive loads.

Ordering Guidelines:

<p>1 - Style</p> <input type="checkbox"/> FDC <input type="checkbox"/> FTC	<p>2 - Starting Type</p> <input type="checkbox"/> 20 Limited Service <input type="checkbox"/> 30 Across the Line <input type="checkbox"/> 60 Autotransformer	<p>3 - Horsepower</p> <input type="checkbox"/> 5 <input type="checkbox"/> 20 <input type="checkbox"/> 50 <input type="checkbox"/> 7.5 <input type="checkbox"/> 25 <input type="checkbox"/> 60 <input type="checkbox"/> 10 <input type="checkbox"/> 30 <input type="checkbox"/> 75 <input type="checkbox"/> 15 <input type="checkbox"/> 40 <input type="checkbox"/> 100	<p>4 - Voltage</p> <input type="checkbox"/> A = 200-208 V <input type="checkbox"/> B = 220-240 V <input type="checkbox"/> C = 380-415 V @ 50 Hz <input type="checkbox"/> D = 440-480 V <input type="checkbox"/> E = 550-600 V <input type="checkbox"/> F = 416 V @ 60 Hz	<p>5 - Microprocessor Control</p> LMR	<p>6 - Language</p> <input type="checkbox"/> L1 - English <input type="checkbox"/> L2 - French <input type="checkbox"/> L5 - Spanish
<p>7 - Options</p> B <input type="checkbox"/> Alarm Bell C1 <input type="checkbox"/> Extra Contacts "Pump Run" (one N.O. std.) C2 <input type="checkbox"/> Extra Contacts "AC Power Failure" (two sets std.) C3 <input type="checkbox"/> Extra Contacts "Phase Rev." (two sets std.) E1 <input type="checkbox"/> NEMA 3R - Raintight Enclosure		E2 <input type="checkbox"/> NEMA 4 - Watertight Enclosure E3 <input type="checkbox"/> NEMA 12 - Industrial Dust-tight Enclosure E5 <input type="checkbox"/> NEMA 4X - Stainless Steel Enclosure F <input type="checkbox"/> Floor Stand H <input type="checkbox"/> High Withstand Rating (refer to tables) I <input type="checkbox"/> Intermediate Withstand Rating (refer to tables)		P7 <input type="checkbox"/> Low Suction Pressure Switch c/w Pilot Light R1 <input type="checkbox"/> Space Heater (120V) R2 <input type="checkbox"/> Space Heater c/w Thermostat R3 <input type="checkbox"/> Space Heater c/w Humidistat	

*All units except FDR and FDF series are available with an automatic transfer switch option. FDC20 controllers are available up to 30HP maximum.

