



APPLICATIONS, Inc.  
energyapps@aol.com

# Stationary Batteries

## 2 Volt - Large Capacity Valve Regulated Cells

**20 Year Warranty**

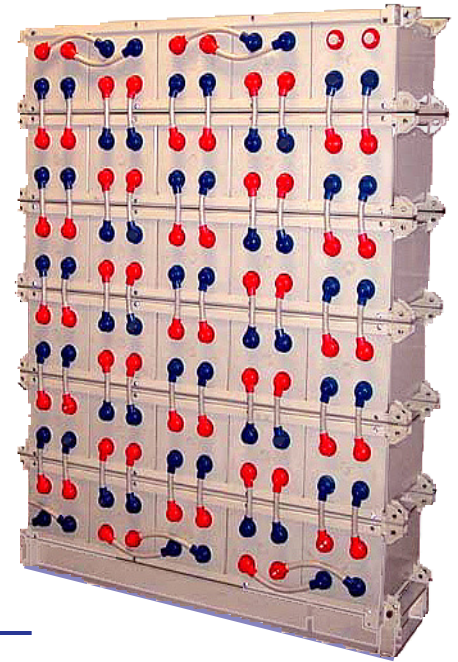
**Heat Welded Design**

**UL Component**

**Seismic Vertical Assembly**

**UL94V0 Available**

**ISO-9001 Certified Plant**



### Communications & Control

- › TELECOMMUNICATIONS
- › BROADBAND SYSTEMS
- › CELLULAR NETWORKS
- › SWITCHGEAR & CONTROLS

### Secure, Reliable Power

- › VERTICAL SEISMIC 4 MODULES
- › INSULATED CABLE CONNECTORS
- › PATENTED COPPER POLE INSERT
- › THREADED BOLTS FOR EVEN TORQUE

### Technical Specifications

Cell Type / Technology	2 Volt Cells, Absorbent Glass Mat (AGM) type
Nominal Ratings	100 to 2000 Ampere Hours to 1.75 v/c for 10 Hours
Operating Temperature	0° to 113°F (-20 to 45C)
Storage Temperature	Temperature effects self discharge
Storage Time	6 months @ 70F prior to refreshing charge
Self Discharge	0.5 - 0.8% per week, @ 70F
Terminal Type	M10, Threaded copper Insert, copper hex bolt
Terminal Torque	11 foot pounds
Case Material	Stanadr ABS, or Flame Retardant ABS, UL94V0
Flame Retardant Option	UL 94V0 option complies with UL1778 requirements
Air Transport	Complies to IATA/CAO provision A67
Surface Transport	Non Hazardous, DOT-CFR title 49, 171-189
Charging Method	Constant voltage, current limited, float service
Typical Charge Current	0.1C - (0.1 x rated capacity in AH)
Maximum Charge Current	0.2C - (0.2 x rated capacity in AH)
Maximum AC Ripple	Less than 1% RMS ( 3.5% P-P )
Max Discharge Rate (5 seconds)	7C ( 7 x Rated Capacity)
Temperature Compensation	Adjust +/- 0.018 V per °C
Float Charge Voltage, per cell	2.23 - 2.25
Equalize Charge Voltage, per cell	2.30 - 2.35

### Product Features

Vertical Seismic 4 Modules

Certified Zone 4, stackable modules, for strength and footprint. Cells mounted horizontally for ease of inspection. Stacks are shipped assembled, when possible. Standard vertical and horizontal assemblies also available.

ABS Plastic Welded Case

High impact resistant material for good transport and handling . Most models are heat welded seals, with multiple pour epoxy post seals.

Flame Retardant UL94V0

Optional Flame retardant ABS for UL 1778 and NFPA requirements.

Maintenance Free Design

Over 99% oxygen recombination with no electrolyte service required.

UL Recognized Component

Interchangeable with other batteries in performance and safety.

Quality - ISO-9001

Modern and fully automated battery making, forming and test equipment.

Technical data are subject to change without notice. Please confirm important details with the technical department.

### Cell Performance, Amps to 1.75 v/c

Model	V/C	1 min	5 min	15 min	30 min	1 Hr	8 Hr	24 Hr
GFM-200	1.75	540	420	283	196	126	25	10.3
GFM-300	1.75	810	630	425	294	189	38	15.4
GFM-400	1.75	1080	840	567	392	252	50	20.6
GFM-500	1.75	1350	1050	709	490	316	63	25.7
GFM-600	1.75	1620	1260	850	588	379	75	30.9
GFM-700	1.75	1890	1470	992	686	442	88	36.0
GFM-800	1.75	2160	1680	1134	784	505	100	41.2
GFM-900	1.75	2430	1890	1276	882	568	113	46.3
GFM-1000	1.75	2700	2100	1418	980	632	125	51.5
GFM-1400	1.75	3780	2940	1985	1372	884	175	72.1
GFM-1500	1.75	4050	3150	2126	1470	947	188	77.2

### Cell Performance, Amps to 1.67 v/c

Model	V/C	1 min	5 min	15 min	30 min	1 Hr
GFM-200	1.67	720	540	322	215	135
GFM-300	1.67	1080	810	483	322	202
GFM-400	1.67	1440	1080	644	430	270
GFM-500	1.67	1800	1350	806	538	338
GFM-600	1.67	2160	1620	967	645	405
GFM-700	1.67	2520	1890	1128	753	473
GFM-800	1.67	2880	2160	1289	860	540
GFM-900	1.67	3240	2430	1451	968	608
GFM-1000	1.67	3600	2700	1612	1076	676
GFM-1400	1.67	5040	3780	2256	1505	945
GFM-1500	1.67	5400	4050	2418	1614	1014

### Temperature Derating

The below multipliers can be used to reduce table data performance values, or use the inverse of the multiplier to increase the load prior to selecting from the data tables.

Complex calculations should be reviewed by your local representative.

Temperature		Multiplier		
F	C	< 1 Hr		> 1 Hr
104	40	1.04		1.06
86	30	1.01		1.02
77	25	1.00		1.00
68	20	0.95		0.97
50	10	0.88		0.90
40	4	0.83		0.84
32	0	0.76		0.77
14	-10	0.58		0.60
0	-18	0.43		0.45
-4	-20	0.38		0.40
-10	-23	0.30		0.32
-20	-29	0.20		0.22

### Cell Dimensions - In Horizontal Position - Front Terminals - Vertical Stacks

Dimensional Data		USA			Metric			
Model	Lbs.	W	H	D	Kg	W	H	D
GFM-200	35	4.7	7.9	15.2	16	120	200	385
GFM-300	51	6.3	7.9	15.2	23	161	200	385
GFM-400	66	7.9	7.9	15.2	30	201	200	385
GFM-500	84	9.5	7.9	15.2	38	242	200	385
GFM-600	99	11.1	7.9	15.2	45	283	200	385
GFM-700	132	7.2	9.6	24.6	60	183	244	624
GFM-800	136	7.2	9.6	24.6	62	183	244	624
GFM-900	165	8.6	9.6	24.6	75	218	244	624
GFM-1000	167	8.6	9.6	24.6	76	218	244	624
GFM-1400	242	9.6	12.0	24.6	110	244	305	624
GFM-1500	246	9.6	12.0	24.6	112	244	305	624

### Cell Performance, Watts to 1.67 v/c

Model	V/C	1 min	5 min	15 min	30 min	1 Hr
GFM-200	1.67	720	540	322	215	135
GFM-300	1.67	1080	810	483	322	202
GFM-400	1.67	1440	1080	644	430	270
GFM-500	1.67	1800	1350	806	538	338
GFM-600	1.67	2160	1620	967	645	405
GFM-700	1.67	2520	1890	1128	753	473
GFM-800	1.67	2880	2160	1289	860	540
GFM-900	1.67	3240	2430	1451	968	608
GFM-1000	1.67	3600	2700	1612	1076	676
GFM-1400	1.67	5040	3780	2256	1505	945
GFM-1500	1.67	5400	4050	2418	1614	1014



**APPLICATIONS, Inc.**  
energyapps@aol.com

Contact your local sales representative or distributor: