

Electric Fire Pump Controllers Full Voltage – Full Service

The FD30, type *LMR* Controller operates across-the-line where full voltage is applied to the motor for starting by the use of a single motor contactor. Starting inrush current is approximately 600% of rated full load amperes. The FD30 can be programmed for either fully automatic or semi-automatic operation.



FD30

Standard Features

- Microprocessor Control
- Pressure, Voltage & Current Display
- Alarm & Status LED Indication
- LCD Message Retrieval - Last 2048 Messages
- Pressure Transducer - 600 PSI Max.
- Printer-Recorder
- Elapsed Time Meter
- Number of Operations Counter
- Run Period Timer
- Sequential Start Timer
- Weekly Test Timer
- Common Alarm Relay & Contacts
- NEMA 2 Enclosure
- NEMA Rated Contactors
- Emergency Start Operator
- Extra Set of Form-C Contacts for Phase Reversal & Phase Failure
- Additional Output Relay
- Pre-wired Terminals for Remote Start, Deluge Valve, Relief Valve Discharge, Low Suction Pressure & Interlock

Status LEDs

Power On
Pump Running
RPT Timer
Sequence Timer
Local Start
Remote Start
Deluge Valve
Interlock On
Low Pressure

Alarm LEDs

Phase Reversal
Phase Failure
Fail To Start
Undervoltage
Overvoltage
Relief Valve Discharge
Locked Rotor Trip
Low Suction Pressure
Emergency Start

FD20
Limited Service
Controller

FD30
Across-the-Line

FD40
Part Winding

FD50
Primary Resistor

FD60
Autotransformer

FD70
Wye-Delta
Open Transition

FD80
Wye-Delta
Closed Transition

FD90
Soft Start

FDC
Compact

FDF
Foam Pump
Controller

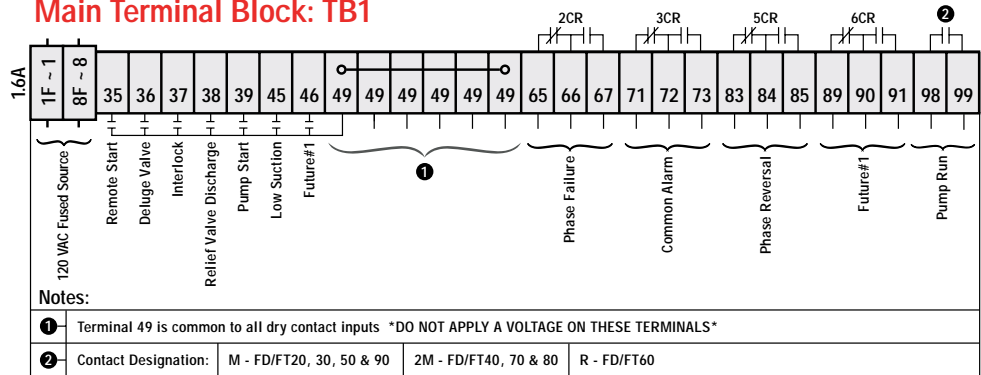
FDR
Residential

FD30 Technical Data & Specifications

Voltage (V)	Motor (Hp)	Dimensions			Withstand Rating (kA)			Weight	
		Height	Width	Depth	Std	Int	High	lbs	Kg
200-208	5-40	60 (1524)	27 (686)	9 (229)	100	150	200	305	138
	50-100	77 (1956)	37 (940)	16 (406)		Consult Factory		565	256
	125-150	77 (1956)	43 (1092)	16 (406)		Consult Factory		660	299
220-240	5-50	60 (1524)	27 (686)	9 (229)	100	150	200	305	138
	60-125	77 (1956)	37 (940)	16 (406)		Consult Factory		565	256
	150-200	77 (1956)	43 (1092)	16 (406)		Consult Factory		660	299
380-415	5-75	60 (1524)	27 (686)	9 (229)	100	150	200	305	138
	100-200	77 (1956)	37 (940)	16 (406)		Consult Factory		565	256
	250-300	77 (1956)	43 (1092)	16 (406)		Consult Factory		660	299
440-480	5-100	60 (1524)	27 (686)	9 (229)	100	150	200	305	138
	125-250	77 (1956)	37 (940)	16 (406)		Consult Factory		565	256
	300-400	77 (1956)	43 (1092)	16 (406)		Consult Factory		660	299
550-600	5-100	60 (1524)	27 (686)	9 (229)	25	100	200	305	138
	125-300	77 (1956)	37 (940)	16 (406)		35	Consult Factory		565
	350-400	77 (1956)	43 (1092)	16 (406)	Consult Factory		660	299	

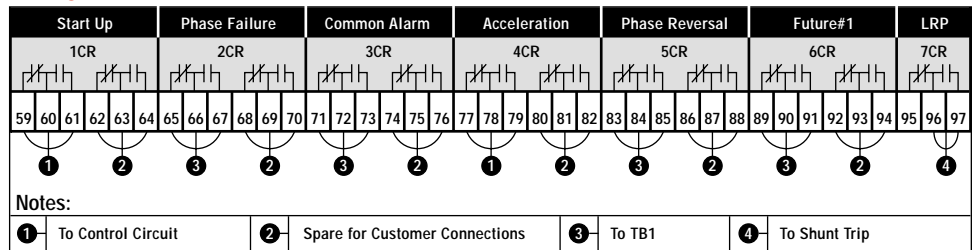


Main Terminal Block: TB1



Relay Card

Contacts Rated for 10A@277VAC or 30VDC



Ordering Guidelines:

FD30

Horsepower	Voltage	Language	Options
<input type="checkbox"/> 15 <input type="checkbox"/> 40 <input type="checkbox"/> 100 <input type="checkbox"/> 250 <input type="checkbox"/> 20 <input type="checkbox"/> 50 <input type="checkbox"/> 125 <input type="checkbox"/> 300 <input type="checkbox"/> 25 <input type="checkbox"/> 60 <input type="checkbox"/> 150 <input type="checkbox"/> 350 <input type="checkbox"/> 30 <input type="checkbox"/> 75 <input type="checkbox"/> 200 <input type="checkbox"/> 400	<input type="checkbox"/> A = 200-208 V <input type="checkbox"/> B = 220-240 V <input type="checkbox"/> C = 380-415 V @ 50 Hz <input type="checkbox"/> D = 440-480 V <input type="checkbox"/> E = 550-600 V <input type="checkbox"/> F = 416 V @ 60 Hz	<input type="checkbox"/> L1 - English <input type="checkbox"/> L2 - French <input type="checkbox"/> L5 - Spanish	B <input type="checkbox"/> Alarm Bell C1 <input type="checkbox"/> Extra Contacts - "Pump Run" (one N.O. std.) C2 <input type="checkbox"/> Extra Contacts - "AC Power Failure" (two sets std.) C3 <input type="checkbox"/> Extra Contacts - "Phase Reversal" (two sets std.) F <input type="checkbox"/> Floor Stand - (standard c/w floor mounted enclosures) H <input type="checkbox"/> High Withstand Rating - (refer to tables) I <input type="checkbox"/> Intermediate Withstand Rating - (refer to tables)
E1 <input type="checkbox"/> NEMA 3R - Raintight Enclosure E2 <input type="checkbox"/> NEMA 4 - Watertight Enclosure E3 <input type="checkbox"/> NEMA 12 - Industrial Dust-tight Enclosure E5 <input type="checkbox"/> NEMA 4X - Stainless Steel Enclosure P7 <input type="checkbox"/> Low Suction Pressure Switch (ALCO) R1 <input type="checkbox"/> Space Heater - (120V) R2 <input type="checkbox"/> Space Heater - c/w Thermostat R3 <input type="checkbox"/> Space Heater - c/w Humidistat			

*All units except FDR and FDF series are available with an automatic transfer switch option.